

# **Long Term Plan 2024-34**

## **Joint development briefing**

**Oct 11, 2023**

# Long Term Plan 2024-34

---

- This briefing is one of a series held as part of the development of the Long Term Plan 2024-34.
- **All discussions involve draft material and reflect a position on the day.**
- Decisions will be set out in the draft Long Term Plan, which will be adopted for consultation in February 2024.
- This recording is intended to provide residents with an overview and understanding of the big picture issues, and therefore may not include all detail and matters discussed at the briefing.

# Community Board Presentation

# ***Waihoru Spreydon-Cashmere-Heathcote*** **Long Term Plan Priorities**





# What we've heard from the Community

---

1. *Climate Change*
2. *Safe Travel Choices*
3. *Parks and Gardens*
4. *Enabling Development\**



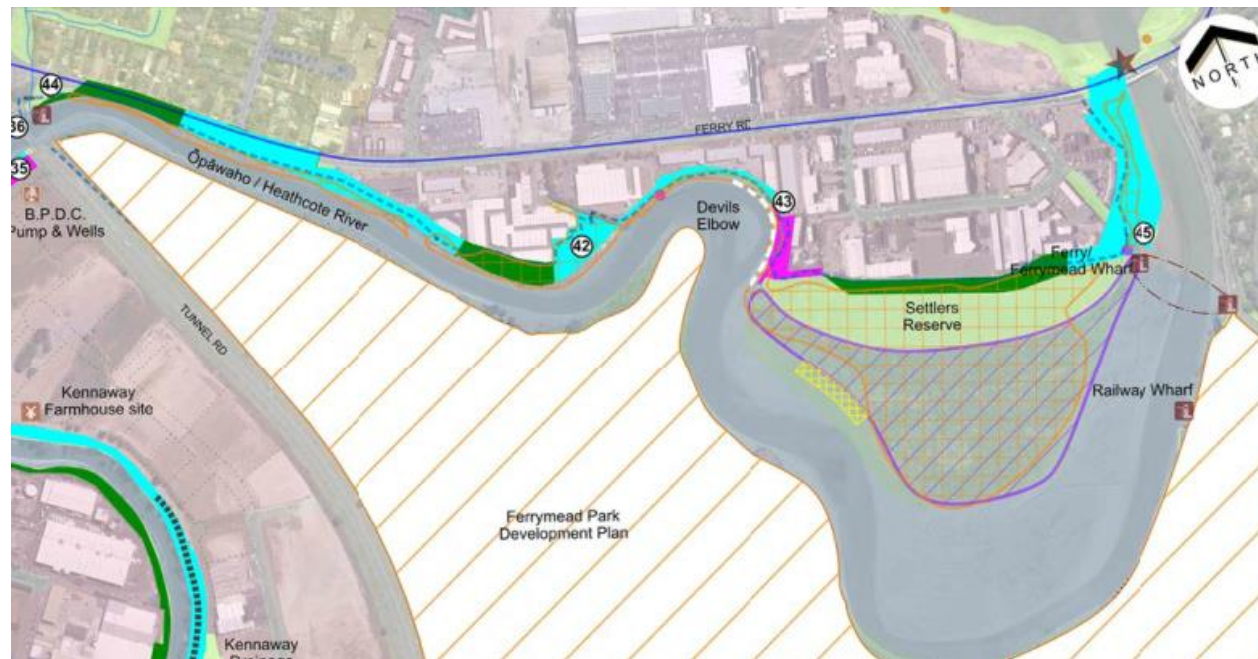
# Community Board Priorities

What the Priority (project) is	Currently funded?	Where does this sit in current LTP?
Rebuild of South Library	Yes	Current - 2026
Safe Travel Choices	Yes	CRAF and CERF funding
Ki Uta ki Tai	Yes	Late 2023
Operational Resource for Growing Neighbourhoods	No	
Strengthening Communities Funding	Yes	



# Questions

---





# *Waipapa Papanui-Innes-Central* Long Term Plan Priorities

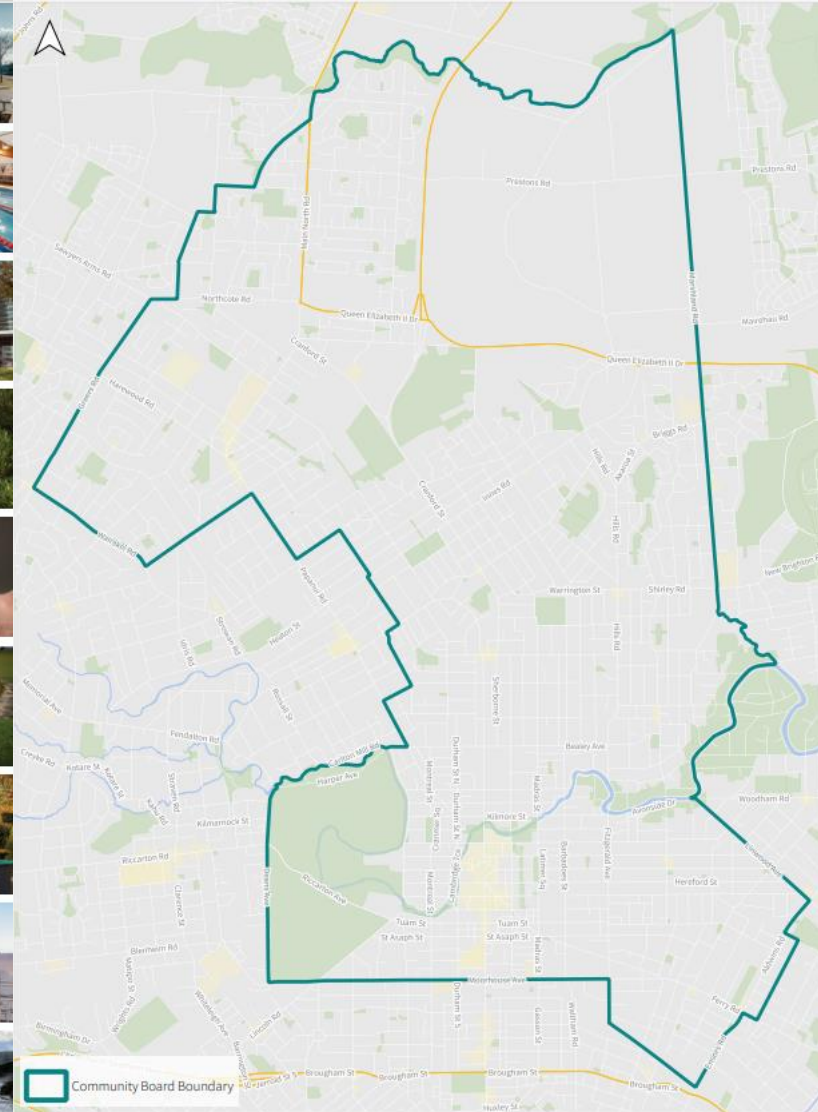




# What we've heard from the Community

## *'What Matters Most' for Board Area*

- *Climate Change & Climate Resilience*
- *Drinking Water*
- *Roads and Footpaths*
- *Travel Choice*
- *Parks and Gardens*
- *Community Development*
- *Community Funding (SCF)*



# Community Board Priorities



What the Priority (project) is	Currently funded?	Where does this sit in current LTP Substitution?
Shirley Community Reserve	Yes	<ul style="list-style-type: none"> <li>Facility funding mostly 30/31, small portion in 29/30.</li> <li>Parks funding mostly 28-30, small portions 26-28.</li> <li>Advocate to retain Facility and Parks funding to use interchangeably on the Reserve as a whole with construction of option selected through consultation process starting FY28.</li> </ul>
Transport Connectivity	Yes	<ul style="list-style-type: none"> <li>Retain DEMP funding.</li> <li>Funding for projects reflecting Board Plan priority around transport initiatives and connectivity, as well as what heard from community around prioritising climate change, roads and footpaths, and travel choices. With climate change top for community ensure projects that would lower emissions retained.</li> </ul>
Papanui Youth Facility/Intensification	Yes	<ul style="list-style-type: none"> <li>Parks funding mostly 28/29, small portions 26-28.</li> <li>Advocate to retain Facility and Parks funding and that development in East Papanui comes with provision for community amenities.</li> </ul>
Phillipstown Community Hub	Yes	<ul style="list-style-type: none"> <li>Facility funding mostly 30/31, small portion in 29/30.</li> <li>Advocate to retain funding. Level of funding likely to be limiting with inflationary pressures.</li> </ul>

# Questions

---





# Waimāero Fendalton-Waimairi-Harewood Long Term Plan Priorities





# What we've heard from the Community

---

1. From the recent 'What Matters Most' campaign, the top five core services for the Waimāero Board area were:

- *Climate change*
- *Drinking water*
- *Roads and footpaths*
- *Parks and Gardens*
- *Travel choices*



2. General feedback from residents include:

- *Safer roads for all users, particularly intersections (more turning arrows needed)*
- *Concerns about continual rates increases – people are struggling to afford the basics*
- *We need to be focusing on the 'must haves' and taking a break from the 'nice to haves'*

# Community Board Priorities

What the Priority (project) is	Currently funded?	Where does this sit in current LTP Substitution?
Undertake improvements to the driveway and carpark at Sheldon Park, Belfast, and upgrade of playing fields	Partially	There is a project in the LTP for renewing the hard surfaces at Sheldon Park. The Board seeks that this project is retained, brought forward and expanded to include playing field improvements.
Investigate the extension of kerb and channelling from 347-379 Gardiners Road, Harewood	No	There is a Gardiners Road Corridor Improvement project in the LTP with delivery scheduled for FY27/28. The Board seeks for the kerb and channelling to be investigated as part of the scoping work for this existing project.

# Community Board Priorities

What the Priority (project) is	Currently funded?	Where does this sit in current LTP Substitution?
Traffic safety improvements at the Radcliffe Road/Main North Road Intersection	Partially	There is a project in the LTP for improvements for the Radcliffe Road Corridor. The Board seeks to ensure this project can include work on the Main North Road intersection.
Bring forward funding for the Mona Vale Bathhouse restoration project	Yes	There is money on budget in FY28/29 of the LTP. The Board wants to ensure this funding is retained and encourages the Council to bring it forward.

# Questions

---



# ***Waipuna Halswell-Hornby-Riccarton Long Term Plan Priorities***



# What we've heard from the Community

---

1. Following the What Matters Most Campaign, the top five core services for the Waipuna Halswell-Hornby-Riccarton Ward in order were Climate Change, Drinking Water, Roads & Footpaths, Travel Choice, and Parks & Gardens.
2. The pressing issue of community facilities is evident as local groups struggle to secure suitable spaces for their activities.
3. Our community has been active in voicing concerns about road safety and safety matters in general, underscoring the ongoing importance of addressing issues such as speeding, enhancing safer crossings, and establishing new safety measures.



# Community Board Priorities

What the Priority (project) is	Currently funded?	Where does this sit in current LTP Substitution?
New pedestrian connections to link subdivisions in Halswell	No	New project
Development and delivery of a Hornby Masterplan	No	New project
Revitalisation of Sockburn Park to provide outlets for young people to be safe in with a sense of belonging	No	New project





# Questions

---





# ***Te Pātaka o Rākaihautū*** ***Banks Peninsula*** **Long Term Plan Priorities**



# What we've heard from the Community

---

1. *Proactive Planning for Climate Change*
  - *Flood mitigation*
  - *Improve infrastructure to support community resilience*
2. *Cruise & Destination Management Plan*
3. *Anti-Social Road Users*
4. *Protect and enhance biodiversity*





# Community Board Priorities

What the Priority (project) is	Currently funded?	Where does this sit in current LTP Substitution?
Flooding of Rural Origin	N	Yew Cottage Refurbishment, pg. X
Safeguarding Rural Roads Clarify/Review residents' expectations for rural roads LOS Identify/target future betterment opportunities for rural roads	N Y partially	Weather Event Emergency Response
Keep Improvements on Budget for Naval Point and Akaroa Wharf	Y	Proj. 357, pg. 189 – Naval Point Proj. 2356, pg. 189 – Akaroa Wharf



# Questions

---





# *Waitai*

## ***Coastal-Burwood-Linwood***

### **Long Term Plan Priorities**



# What we've heard from the Community

---

1. *Industrial-Residential Interface Plan Change*
2. *New Brighton Masterplan*
3. *Mairehau Road Intersections (Burwood and Prestons Park Drive)*
4. *Residential street renewals and Safety*



# Community Board Priorities

What the Priority (project) is	Currently funded?	Where does this sit in current LTP Substitution?
Enhancing Environmental Wellbeing - Moving and Replacing the Organics Processing Plant	Yes	2026, 2027 and 2028
Improve Access to Burwood Community Facilities – Support the Marshlands Hall Trust to progress towards commencing a community facility in the Prestons area	No	We would like to advocate for this from FY 2027-28
Earthquake Legacy and Transport Projects - Pages Road Bridge Renewal	Yes	2027 and 2028





# Questions

---

