



Current layout at Greers and Langdons intersection

What's being upgraded

At the Greers and Langdons intersection we're planning to install:

- New traffic lights
- Signalised pedestrian crossing
- Cycle lanes on all approaches

To make these improvements we'll need to remove on-street parking on the approaches to the intersection and remove some of the larger trees and replace them with lower shrubs.

To keep traffic flowing, we also need to make changes to the Greers and Reynolds Avenue intersection.

To keep traffic flowing, we also need to make changes to the Greers and Reynolds Avenue intersection.

There are two options for the Greers Road / Reynolds Avenue intersection.

Take a look at the plans inside this leaflet and let us know which one you prefer.

How the project come about

The development and expansion of the Northlink Retail Park has increased traffic flows on local roads and caused significant delays at the intersection. Rat-running through nearby communities has created both pedestrian safety risks and additional traffic related concerns.

Impact on on-street parking

On-street car parks will be reduced by 26 on Greers Road, 28 on Langdons Road. On the proposed options for Reynolds Road Option 1 (left in/left out) parks on Reynolds Road will be reduced by two and for Option 2 (cul-de-sac) six.

Next steps

All feedback will be considered by the project team and the plans updated where appropriate. Both the Waipapa Papanui-Innes-Central and Waimāero Fendalton Harewood Waimairi Community Boards will receive all feedback and a recommendation from council staff . Both Community Board recommendation will be presented to Council and make a decision in either late 2023/2024.

Korero mai | Lets talk Greers and Langdons Road intersection upgrade

Tell us what you think by Tuesday 31 October 2023

Letstalk.ccc.govt.nz

Christchurch
City Council

We're upgrading your intersection

As part of our commitment to manage the negative impacts of increased traffic from the Northlink Link expansion, we're making it way safer for everyone at the Greers and Langdons Road intersection, which will also impact the Greers and Reynolds Avenue intersection.

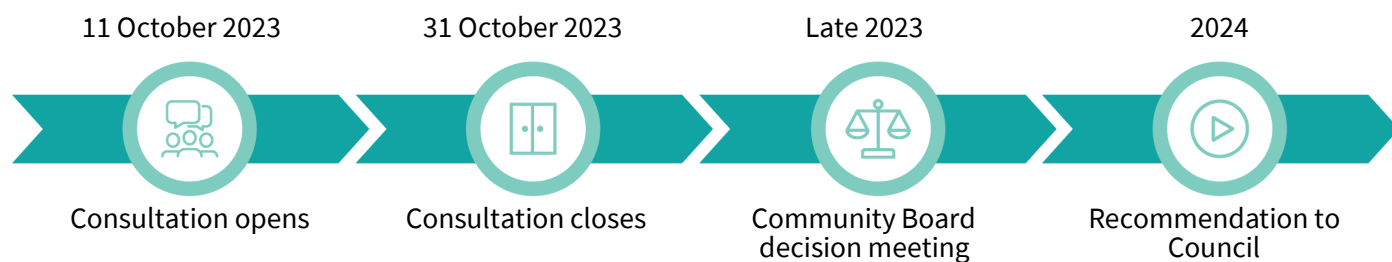
About 29,000 vehicles or more travel through Greers and Langdons Road per day.

Our proposed plans aim to:

- Improve the crossing safety for pedestrian and cyclists from increased vehicle movements at the intersection of Langdons Road and Greers Road.
- Reduce the delay for vehicles turning at the intersection of Langdons Road and Greers Road.
- Prevent "rat-running" via Reynolds Avenue.



Current layout at Greers and Langdons intersection



To comment on the plan and find out more

Go online **letstalk.ccc.govt.nz**
or download the submission form
and return to:
Christchurch City Council,
PO Box 73016, Christchurch 8154

☎ Speak to Irene MacArthur
Engagement Advisor
@ 03 941 6293
letstalk@ccc.govt.nz

Christchurch
City Council

Join our webinar

If you would like to discuss this project with the team, please join us for a webinar

Date: Thursday 27 October 2023

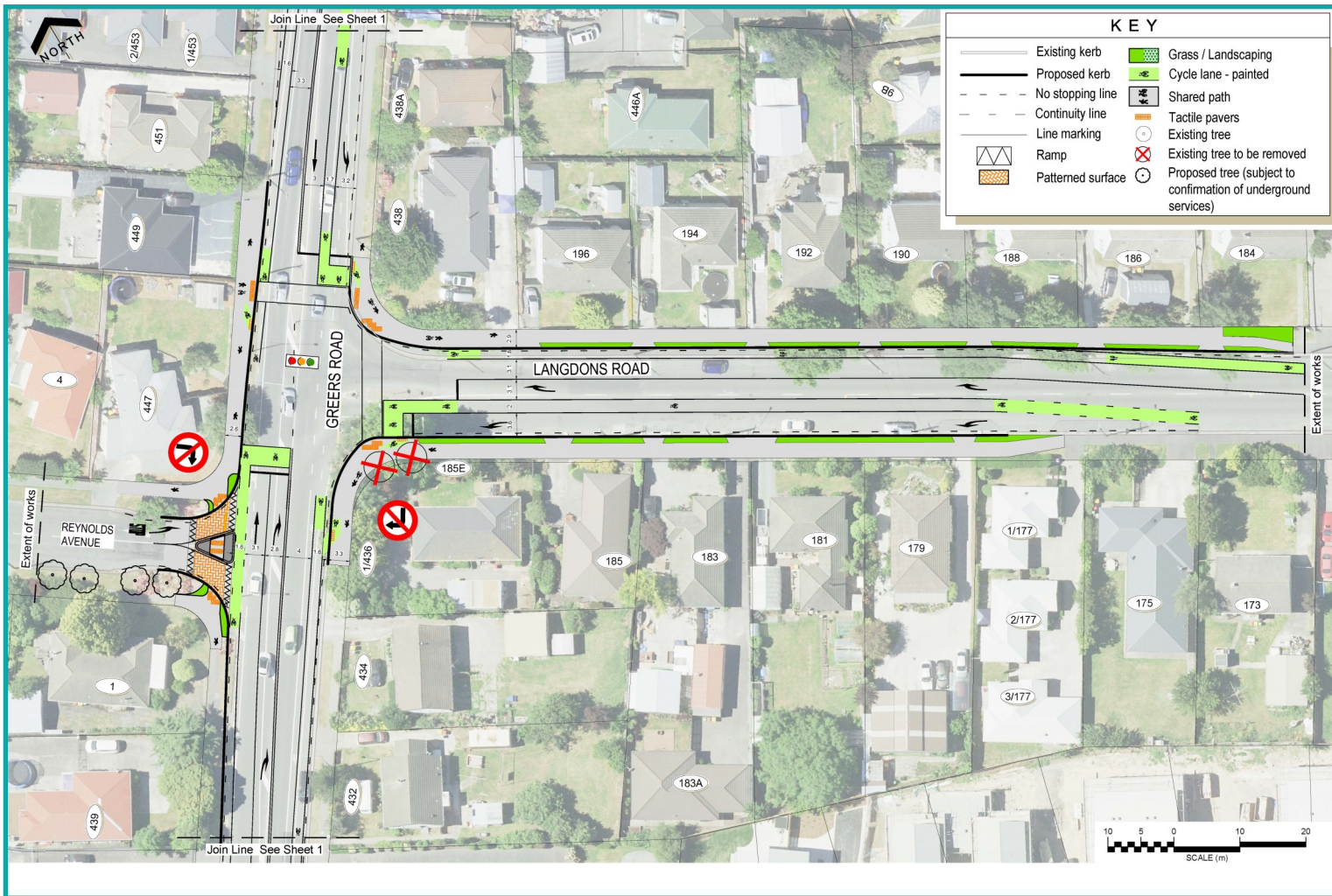
Time: 12:00pm or 6:30pm

Location: Online Teams webinar (Scan QR code above to book)

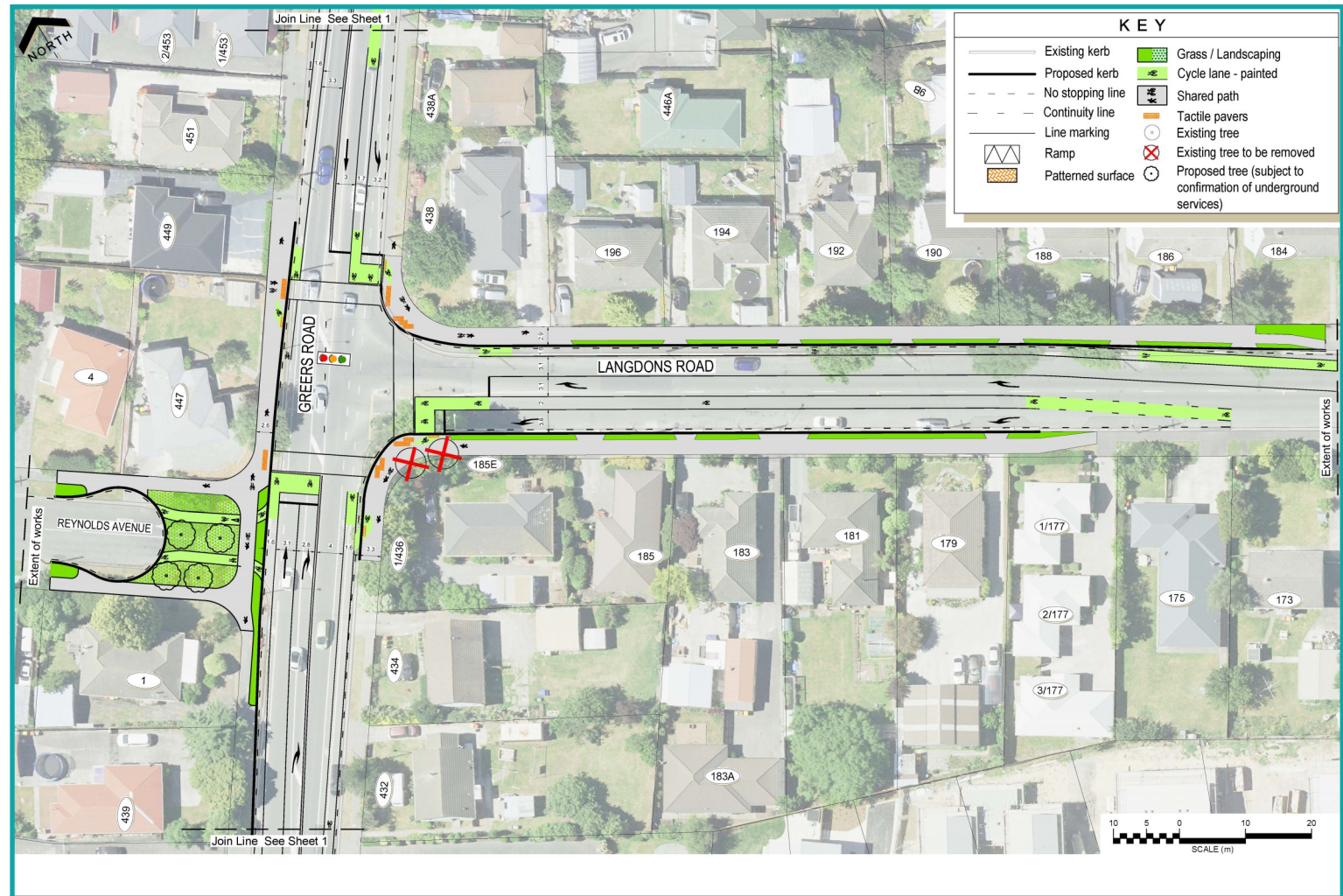


Christchurch
City Council

Tell us what you think by Tuesday 31 October 2023



Option 1: Reynolds Avenue left in left out



Option 2: Reynolds Avenue cul-de-sac

